

## **BT Bulletin – Barrier-free Showers**

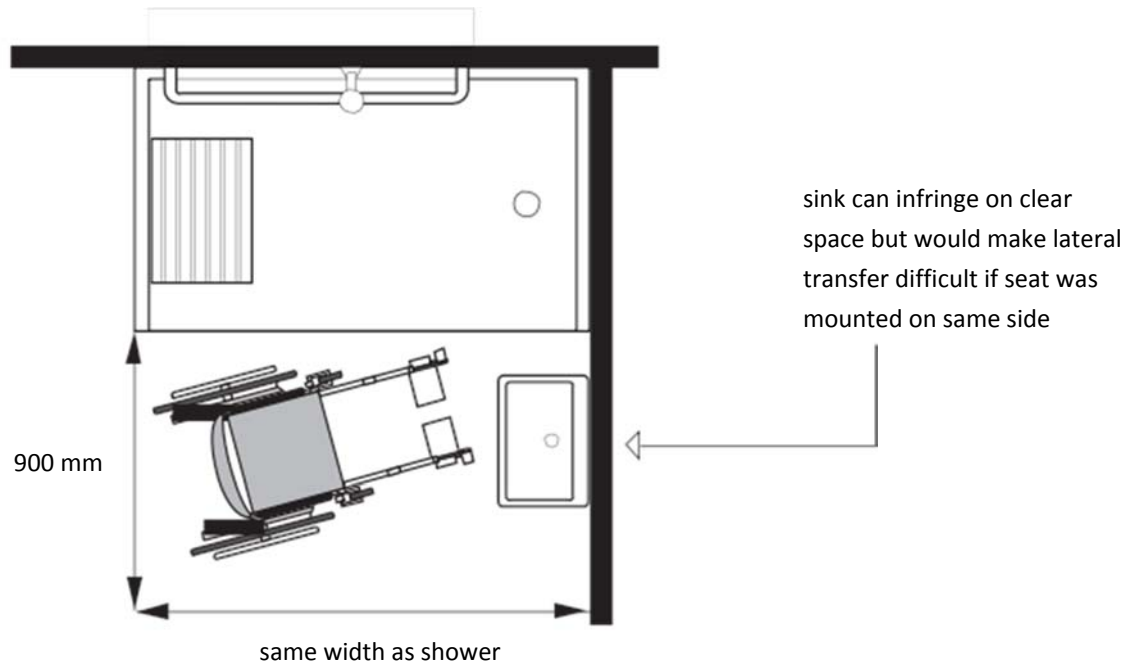
### **NBCC 2010: 3.8.3.13. Showers**

1) Except within a *suite of care occupancy* or a *suite of residential occupancy*, where showers are provided in a *building*, at least one shower stall in each group of showers shall be *barrier-free* and shall

- a) be not less than 1 500 mm wide and 900 mm deep,
- b) have a clear floor space at the entrance to the shower, not less than 900 mm deep and the same width as the shower, except that fixtures are permitted to project into that space provided they do not restrict access to the shower  
(see Appendix A),
- c) have a slip-resistant floor surface,
- d) have a bevelled threshold not more than 13 mm higher than the finished floor,
- e) have a hinged seat that is not spring-loaded or a fixed seat, the seat being
  - i) not less than 450 mm wide and 400 mm deep,
  - ii) mounted approximately 450 mm above the floor, and
  - iii) designed to carry a minimum load of 1.3 kN,
- f) have a horizontal grab bar conforming to Subclauses 3.8.3.8.(1)(d)(iv), (d)(v) and (d)(vi) that is  
(see Appendix A)
  - i) not less than 900 mm long,
  - ii) mounted between 700 mm and 800 mm above the floor, and
  - iii) located on the wall opposite the entrance to the shower so that not less than 300 mm of its length is at one side of the seat,
- g) have a pressure-equalizing or thermostatic-mixing valve controlled by a lever or other device operable with a closed fist from the seated position,
- h) have a hand-held shower head with not less than 1 500 mm of flexible hose located so that it can be reached from the seated position and equipped with a holder so that it can operate as a fixed shower head, and
- i) have fully recessed soap holders that can be reached from the seated position.

**A-3.8.3.13.(1)(b) Clear Space at Entrances to Showers.**

The clear space at the entrance to a shower may be encroached upon by fixtures such as a wall hung sink which does not interfere with the leg rests of the wheelchair. However, this sink could restrict movement for persons who need to make a lateral transfer if it were installed at the seat end of the shower.



**A-3.8.3.13.(1)(f) Grab Bars.**

One horizontal grab bar is required to be installed on the wall next to the seat. A grab bar behind the seat would prevent the user from leaning back against the wall, while one located on the wall opposite the seat cannot be reached from the seated position. The seat itself may be used in conjunction with the bar for transfer. If design flexibility is required, fold away grab bars can be used as an alternative.